



# HS-CO<sub>2</sub>

New Product



Our **HS-CO<sub>2</sub> Series** of Bulk Carbon Dioxide Storage Tanks are now available. Chart's **Horizontal CO<sub>2</sub>** product line complements the existing VS-CO<sub>2</sub> products, giving you designs in both vertical and horizontal to satisfy your needs. The **HS-CO<sub>2</sub>** series is built with the same durable all-welded outer container as the VS-CO<sub>2</sub> series, while maintaining lower life cycle costs. Utilizing our composite insulation system along with superior vacuum technology, we are able to offer:

- ▶ An ultra-low heat leak, eliminating the need for a costly refrigeration system in most applications.
- ▶ No costly down time to refurbish water-soaked or deteriorated foam insulation.



Every **HS-CO<sub>2</sub>** pressure vessel is manufactured, tested and stamped in accordance with the latest edition of the ASME Boiler and Pressure Vessel Code, Section VIII, Division I, using SA612 normalized steel. Our **HS-CO<sub>2</sub> Bulk Stations** are equipped with an internal cleansing system operated externally, eliminating the need for costly manways.

## Features and benefits:

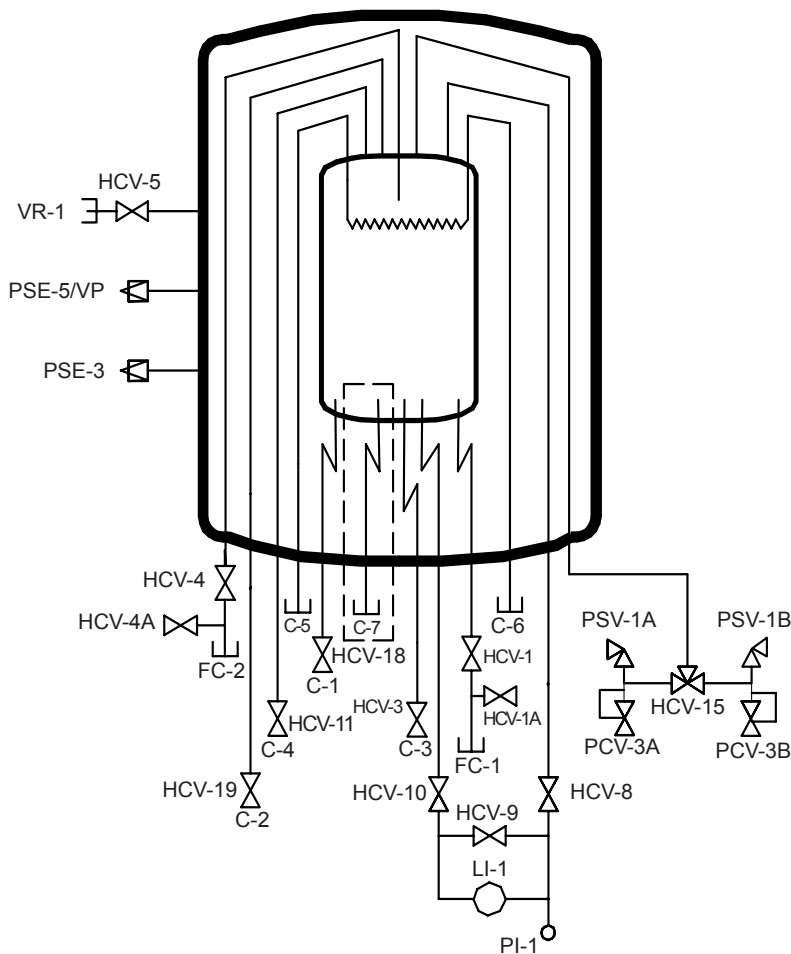
- ▶ Stainless-steel piping for greater strength, durability
- ▶ Stainless-steel ball valves standard on all fill and process lines
- ▶ Minimum number of piping joints, reducing potential piping leaks and maintenance costs
- ▶ CGA fill and return fittings with drain valves standard
- ▶ Piping design results in flexible equipment connection
- ▶ Dual regulator system standard, eliminating any safety concerns
- ▶ 6 Ton equipped with capped refrigerant lines and internal coil (available as option on all other models)
- ▶ Pressure Building and Vaporizer options available, inquire with Chart for more details

# HS-CO<sub>2</sub> New Product

Model	Gross Capacity		Net Capacity		MAWP*		Width		Height		Length		Weight**	
	Ton	Tonne	Ton	Tonne	PSIG	bar	in	mm	in	mm	in	mm	lbs	kg
6 Ton	6.8	6.2	6.4	5.8	350	24.1	68	1,728	80	2,032	188	4,775	9,300	4,130
14 Ton	13.2	12.0	12.6	11.4	350	24.1	86	2,184	95	2,184	233	5,913	17,400	7,890
30 Ton	31.3	28.4	29.8	27.0	350	24.1	114	2,900	127	3,226	280	7,112	39,700	18,008
50 Ton	48.1	43.6	45.8	41.5	350	24.1	114	2,900	127	3,226	396	10,058	57,100	25,900

\* Maximum Allowable Working Pressure

\*\* Tare weight



## Nomenclature

C-1	Connection, Auxiliary Liquid
C-2	Connection, Auxiliary Refrigeration
C-3	Connection, PB Liquid
C-4	Connection, PB Vapor
FC-1	Connection, Fill
FC-2	Connection, Vapor Return/Full Trycock
HCV-1	Valve, Bottom Fill
HCV-1A	Valve, Drain
HCV-3	Valve, PB Liquid
HCV-4	Valve, Vapor Return/Full Trycock
HCV-4A	Valve, Drain
HCV-5	Valve, Vacuum Gauge Tube
HCV-8	Valve, LI-1 Vapor Phase
HCV-9	Valve, LI-1 Equalization
HCV-10	Valve, LI-1 Liquid Phase
HCV-11	Valve, PB Vapor
HCV-15	Valve, Safety Relief Selector
HCV-18	Valve, Auxiliary Liquid
HCV-19	Valve, Auxiliary Vapor
LI-1	Level Indicator, Inner Vessel
PI-1	Pressure Indicator, Inner Vessel
PCV-3A	Pressure Control Valve, Econ Vent
PCV-3B	Pressure Control Valve, Econ Vent
PSE-3	Pressure Safety Element, Outer Vessel
PSE-5/VP	Pressure Safety Element, Otr Ves., Vac Port
PSV-1A	Pressure Safety Valve, Inner Vessel
PSV-1B	Pressure Safety Valve, Inner Vessel
VR-1	Vacuum Readout, Outer Vessel

*Refrigeration Option (Standard on 6 Ton)*

C-5	Connection, Auxiliary Refrigeration
C-6	Connection, Auxiliary Refrigeration

*Dashed Line represents Additional Line (Standard on 30/50 Ton Only)*

C-7	Connection, Secondary Auxiliary Liquid
-----	--



Chart Industries Inc., Storage Systems Division, 3505 County Road 42 West, Burnsville, MN 55306-3803

Web: [www.chart-ind.com](http://www.chart-ind.com); E-mail: [storagesystems@chart-ind.com](mailto:storagesystems@chart-ind.com)

US: 800-400-4683, FAX: 952-882-5191; Worldwide: 952-882-5090; FAX: 952-882-5008

Chart Europe GmbH: +49 (0)212-700 570, FAX: +49 (0)212-700 577; Chart Asia Inc.: 65-838-5209, FAX: 65-235-3680